

Dating Older Houses

With Tim Ragle of Jonathan Jesup Restoration

Friday, March 14 7pm at Next Stage

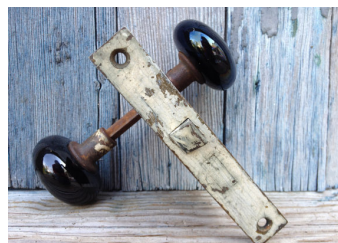
A Putney Historical Society Presentation



On Friday, March 14, PHS Vice President and master craftsman Timothy Ragle will give a talk about antique interiors. Using hands-on artifacts and slides from Putney houses, Tim will teach his audience how to “read” an older house to determine its age, and what parts of the house may be original, or added at later dates. This will develop your eye for architectural detail, especially if you live or work in a pre-1850 building. Much of our nicest Vermont workmanship involves these antique interior features.

Tim trained at a top furniture design program at the Master’s Level and was employed for over 31 years in construction and woodworking and as shop foreman. He has designed and built original furniture exhibited and sold throughout New England, and lectured and judged at national shows as a recognized expert antique carriage restorer. He resides here in Putney, where he remains actively involved in restoration, historic research and preservation.

“I have been building and designing furniture for 35 years. I was fortunate to study with both Gib Taylor at Marlboro College and then later with the celebrated master craftsman par excellence, Tage Frid, at the Rhode Island School of Design. Both teachers excited a curiosity and passion within me that that exists to this day.”



**Immediately after Community Supper
Suggested donation \$10**

**All proceeds support the 15 Kimball Hill
/ Next Stage capital campaign**